

FOR RELEASE ON 19/12/2023

MEDIA RELEASE

Tom Brennan

Managing Director

Tom.Brennan@vertechgroup.com.au

+61 448 920 899



VERTECH WELCOMES WIND ENERGY SPECIALISTS REMO TO THE GROUP

Remo Technical Services (Remo) announces its recent integration into the CWL Group of companies. This development marks a notable progression in Remo's pursuit of advancements in the wind energy sector.

Remo has actively engaged in wind energy projects onshore and offshore for the last six years. The company's focus on innovation and excellence has been pivotal in its operations. Now, aligning with CWL Group companies such as Vertech Group in the Asia Pacific and Sonomatic in the UK and Europe, Remo aims to enhance its capabilities and scale its operations.

Russell Bell, the founder of Remo Technical Services, elaborates on this transition: "Merging with the CWL Group opens significant growth avenues for Remo Technical Services. Our experience in the wind energy sector positions us to leverage this opportunity, potentially expanding our services to existing and prospective clients."

He adds, "This collaboration with the CWL Group represents a combination of expertise, resources, and shared goals. The Group, recognised for its role in the energy sector through entities like Vertech Group and Sonomatic, provides extensive experience and a network expected to augment our global capabilities. This partnership aims to foster innovation, enhance operational efficiency, and deliver more comprehensive solutions to our clientele."

Alex Cesan, a director at CWL Group, comments, "The Group's ongoing expansion into renewable energy, including hydroelectric power support in New Zealand, advanced inspection techniques in the UK wind sector, and extensive work in solar and wind energy with AUAV, aligns with global renewable energy goals, as emphasised at the UN COP 28 climate conference. This step is seen as both timely and significant."

Mr Bell addresses Remo's client base: "This new phase is anticipated to offer improved services, expanded expertise, and a wider array of solutions, catering to the evolving requirements of the wind energy sector. It aims to enhance support and resources for our clients, positioning us as a more equipped partner for managing renewable energy projects."

As Remo embarks on this new chapter, the company reaffirms its dedication to its foundational values. Remo looks forward to continued growth, achieving new milestones, and contributing positively to the renewable energy sector.

END

EXECUTIVE SUMMARY

- Inspection, maintenance, and specialist access provider Vertech Group will partner with REMO in delivering innovative and bespoke wind turbine inspection and servicing solutions.
- This deal provides Vertech Group with more significant resources within the wind energy sector. This is one of multiple acquisitions and joint ventures made by Vertech Group over the last two years.
- The Group acquired Abseil Access in September 2019, Vertech Tank Testing in March 2020, MMA's Asset Integrity Division in October 2020, and entered a joint venture to form Blue Ocean Marine Services in November.
- Vertech Group took part in the majority acquisition of Victorian-based industrial service company APS in January 2021.
- Most recently, Vertech Group acquired the majority of Victorian-based Drone Surveying company AUAV.



MEDIA KIT

VERTECH GROUP PARTNERSHIP WITH REMO

THE PURPOSE

This document is composed to assist the media and our clients to understand Vertech Group's acquisition of REMO. This document includes information on the deal, background on both companies, and media content that is permitted to be use in related articles.



VERTECH GROUP VERTECH GROUP

www.vertechgroup.com.au

VerTech Group provides a comprehensive catalogue of inspection, maintenance, construction and specialist access services to various sectors, including Oil and gas, Mining, Infrastructure, Industrial and Marine industries. VerTech is a pioneer of industrial access and specialist access in Australia, and in 2021, those capabilities will still underpin our core services. In recent years, VerTech Group have diversified to invest heavily in un-manned inspection technologies, today being one of the leading suppliers of Remote Digital Visual Inspections (RDVI), Remotely Operated Vehicles (ROV) and advanced NDT technologies both topside and subsea.

VerTech Group's specialist portfolio of companies (below) provides services that deliver customers best-in-class people armed with innovative and cutting-edge solutions. Through close collaboration, each company's complementary capabilities enable VerTech Group to provide the highest level of service.

VERTECH PORTFOLIO - APAC



www.sonomatic.com

Sonomatic is the group's specialist NDT inspection and integrity engineering provider in Australia. The engineering team can support our customers with RBI, NII and advanced integrity campaigns using the latest inspection and integrity systems generation.



www.geooceans.com

Geo Oceans specialises in Asset-Deployed Remotely Operated Vehicle (ROV) systems and provides cutting-edge inspection, Non-Destructive Testing (NDT) and maintenance services to marine-based and coastal infrastructure markets in Asia Pacific, West Africa, and the Americas.



auav.com.au

AUAV is a drone service business established in 2013. We offer various services, including surveys, inspections, modelling, and custom projects. We process data locally in Australia using our in-house solution called inSite. Our founder, James Rennie, leads a skilled team. We are certified by the Australian Civil Aviation Safety Authority and have all necessary insurance. We are one of the Top 20 drone service providers globally and have recently expanded into the UK and USA.



www.blue-ocean.com.au

Blue Ocean Marine Services (BOMS) is a joint venture between Blue Ocean Monitoring and VerTech Group. Experts in the planning and executing offshore surveys, BOMS utilises a wide range of technologies, including autonomous survey vehicles (AUV), to complete highly detailed site appraisals, subsea inspections, and regulatory compliance scopes.

GROUP INFORMATION

SERVICES

- In-Service Inspection
- Non-Destructive Testing (NDT)
- Marine Class Inspection
- Construction and Decommissioning
- Specialist Maintenance & Repair
- Remote Digital Visual Inspection (RDVI)
- Specialist & Rope Access Services
- Ocean & Marine Habitat Mapping
- Design, Engineering & Fabrication

SECTORS

- Mining & Minerals
- Upstream Drilling
- Oil & Gas Production
- Marine
- Defence
- Infrastructure
- Subsea
- Renewables
- Power Generation

KEY CLIENTS



GROUP KEY PROJECTS - 2023

- NRA Guy Wire Replacement
- Moomba to Cross Border CCS Pipeline Inspection
- 3D Jetty Drone Inspection
- Orautoha Creek Bridge in New Zealand
- 250MW Solar Farm inspection in NSW
- Platform Deployed ROV Jacket Inspection

GROUP HISTORY

KEY MILESTONES

2008, Vertech was founded to provide rope access and inspection services to the WA resource industry. After initial successes, the company quickly began to adapt and broaden its service offerings.

In **2013**, Global Energy Group purchased Vertech. It puts organisational processes, support, and structures in place to allow the company to take that next step and move from a small to medium-sized business. This also allowed Vertech Group to purchase Mini-ROV company Geo Oceans, enabling the service offerings within its marine class sector and the wider Group to be expanded significantly.

2015 saw the establishment of Vertech NZ to support major O&G operators with integrity inspection, marine class and specialist access services.

In **2017**, through our performance on Gorgon, Wheatstone and other LNG construction projects in Australia, Vertech Group was engaged to deliver the same services in the USA for Cameron LNG and Corpus Christi LNG, marking the establishment of Vertech USA and our Houston-based operations.

In **2018**, CWL took an 80% ownership in Vertech Group (this has since expanded to complete ownership). CWL's support allowed Vertech Group to expand further on the east coast of Australia, in Karratha (WA) and New Zealand. This also saw the addition of autonomous and specialist departments such as Vertech RDVI. September 2019 saw Vertech Group acquire Abseil Access (AA). Based in New Zealand, the addition of AA brought further geotechnical, bridge-building, demolition and asset integrity capabilities to the Group. Vertech Roma was established in December, bringing Queensland customers a more comprehensive array of services.

In early **2020**, Vertech Group again grew its capabilities on the East Coast, acquiring Vertech Tank Testing Services. In October of the same year, Vertech Group agreed with MMA Offshore to acquire their Asset Integrity Division. This acquisition further increased the Group's capabilities in the asset integrity field.

In late **2020**, Vertech Group entered into a Joint Venture with Blue Ocean Monitoring to form Blue Ocean Marine Services, which specialises in autonomous underwater services. This agreement further diversified the Group's subsea survey offerings, with the team beginning to work alongside Geo Oceans on several key projects.

In early January of **2021**, Vertech Group made the majority acquisition of APS. This Victorian-based commercial infrastructure company has provided essential services to power generation and infrastructure sectors since 2005.

Vertech then acquired Victorian-based drone surveyor AUAV. Since then, AUAV has expanded their offerings nationally and works closely with the integrity and inspection divisions of the Group.

Just over 13 years after incorporation, Vertech Group has expanded to provide a broad array of inspection, NDT, construction and maintenance services to clients across many sectors by adding specialist service providers.



VERTECH GROUP MEDIA



In-Service Inspection



Non-Destructive Testing (NDT)



Marine Class Inspection



Subsea Inspection



Specialist Maintenance & Repair



Remote Digital Visual Inspection



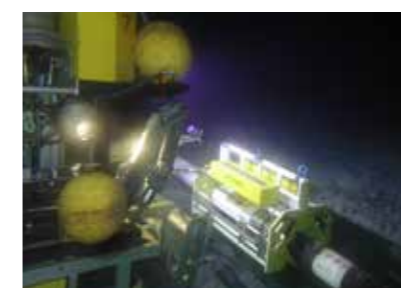
Specialist & Rope Access Services



Ocean & Habitat Mapping



Engineering Services



Sonomatic - Additional Image



Geo Oceans - Additional Image



Abseil Access - Additional Image

REMO

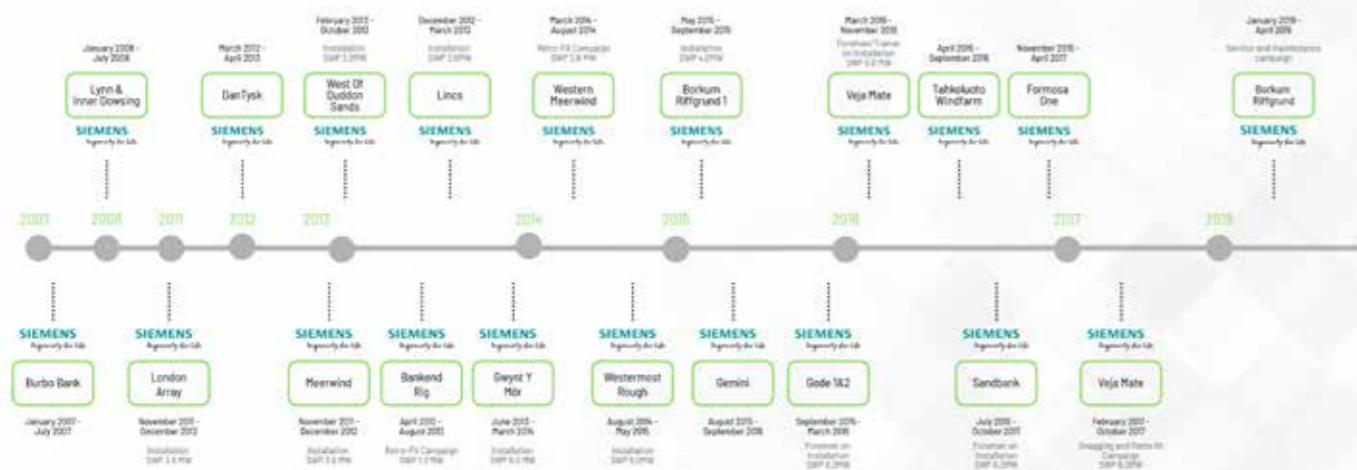
TURBINE EXPERIENCE

HISTORY

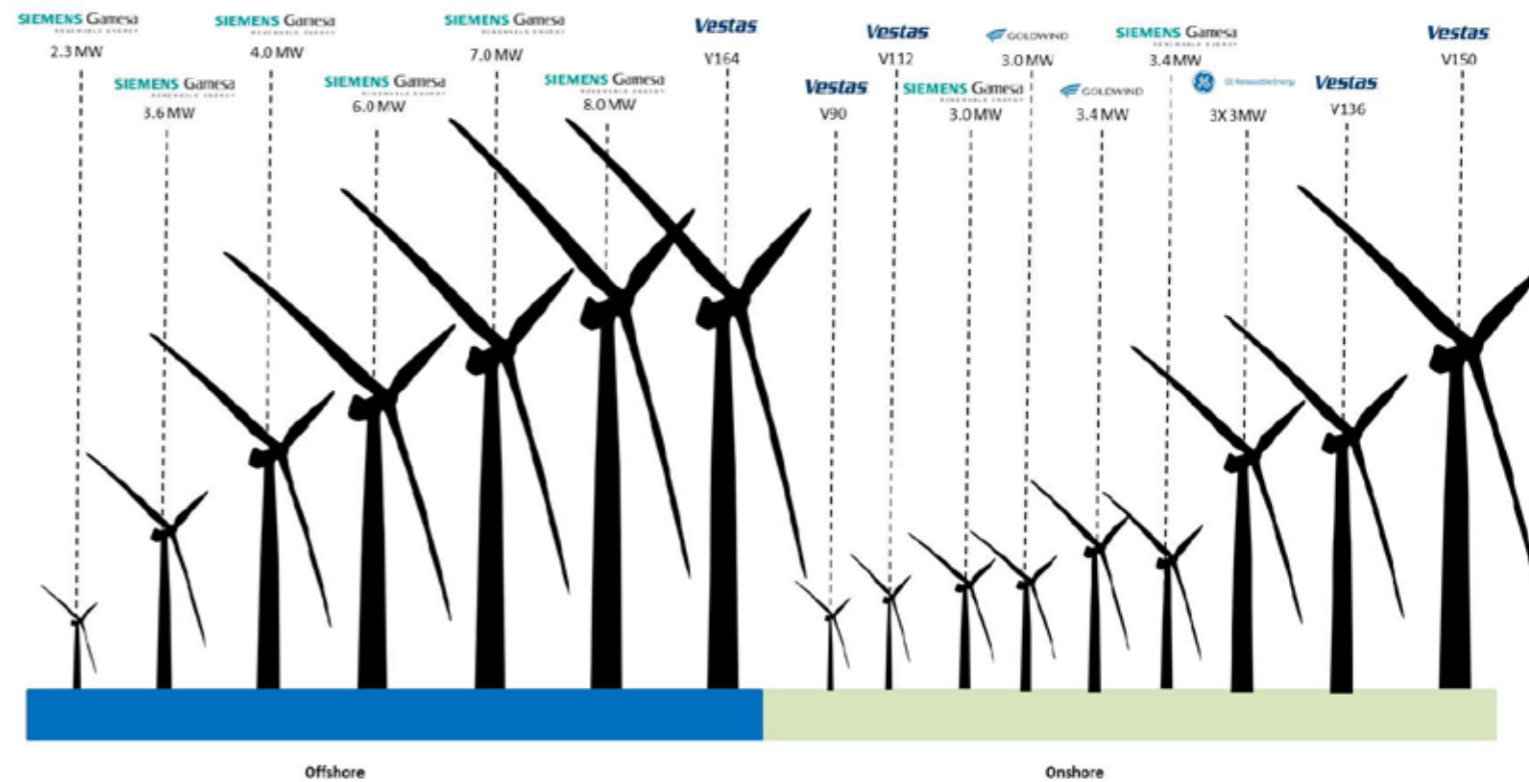
REMO Technical Services, a leading name in turbine inspection, maintenance, and installation, has carved a niche for itself as a top-tier provider of installation and maintenance services in the energy market, especially across the Asia Pacific and Europe. This organisation is committed to offering comprehensive, fully managed turnkey solutions deeply rooted in a rich wind energy foundation and renewable experience. The company's reputation in the energy sector is bolstered by its involvement in significant installation, construction, and decommissioning projects, adopting global best practices to deliver efficient and intelligent solutions for complex and technically demanding tasks, ensuring operational excellence and enhancing the longevity of energy installations.

The company's services span from initial site assessment and project planning to advanced installation and maintenance stages, focusing on the latest in turbine technology to provide clients with state-of-the-art solutions. Emphasising technical proficiency, safety, and environmental sustainability, REMO adheres to strict safety protocols and sustainable practices, prioritising the well-being of its workforce and clients while contributing to sustainable energy development. Committed to continuous improvement and innovation, REMO invests in research and development to remain at the forefront of technological advancements in the renewable energy sector. It positions itself as a reliable and forward-thinking partner in the energy market, offering efficient and sustainable solutions in turbine inspection, maintenance, and installation.

UK / EU Offshore Past Project Experience



TURBINE EXPERIENCE



TURBINE SERVICES

QUOTES & ADVISORS



INSTALLATION & COMMISSIONING



INSPECTION, MAINTENANCE & REPAIR



SPECIALIST ROPE ACCESS



DECOMMISSIONING



INSPECTION & TESTING



BLADE REPAIR & REPLACEMENT



MAJOR COMPONENT REPLACEMENT



SPECIALIST LABOUR SUPPLY

REMO QUOTE ON

"Joining the Group provides a considerable opportunity for the growth of Remo Technical Services. Over the past six years, the business has excelled in completing various scopes across the wind energy sector, both on and offshore. Joining the group allows us to grow and move to the next level, which will broaden our offering to our current and future clients."

"This venture with the CWL Group of companies is not just a partnership; it's a fusion of expertise, resources, and vision. The group is known for its leadership in the energy industry through Vertech Group and Sonomatic, which brings a wealth of experience and a network that will enhance our capabilities globally. Together, we aim to drive innovation, improve efficiency, and offer more comprehensive solutions to our clients."

- REMO COMMENT FROM MANAGING DIRECTOR, RUSSELL BELL

CWL GROUP QUOTE ON

"The group has been expanding its capabilities into the renewables sector over several years including New Zealand-based Abseil Access supports Hydroelectric power generation, Sonomatic in the UK providing Advanced inspection techniques to the Wind sector and our drone and digital twin service provider AUAV who work heavily across solar & wind energy generation areas. With the world committing to tripling renewable energy sources at the UN COP 28 climate conference this next step is a timely one, and one that we are excited to announce"

- ALEX CESAN, A DIRECTOR OF CWL GROUP

CONTACTS

VERTECH GROUP

Tom Brennan

Managing Director

T: +61(8) 6168 7600

E: Tom.Brennan@vertechgroup.com.au

Alex Cesan

General Manager - Sonomatic

T: + 61 498 442 666

E: Alex.Cesan@sonomatic.com

Nick Veitch

Managing Director - Geo Oceans

T: +61(8) 6168 7611

E: Nick.Veitch@geoceans.com

Keith Wallace

Managing Director - Blue Ocean Marine Services

T: +61 409 557 002

E: Keith.Wallace@blue-ocean.com.au

Alex Wilmhurst

General Manager - Abseil Access

T: +64 27 488 2849

E: Alex.Wilmhurst@abseilaccess.co.nz

Nick MacRae

Managing Director - APS

T: +61 9466 1887

E: Nick.MacRae@apsystems.net.au

James Rennie

Managing Director

T: +61 3 9466 1887

E: james.rennie@auav.com.au

REMO

Russell Bell

Managing Director

T: +61 3 9466 1887

E: Russell.Bell@remo-ts.com

MEDIA ENQUIRIES

Vertech Marketing

T: +61 6168 7600

E: Marketing@vertechgroup.com.au



FOLLOW

US ON LINKEDIN



www.vertechgroup.com.au